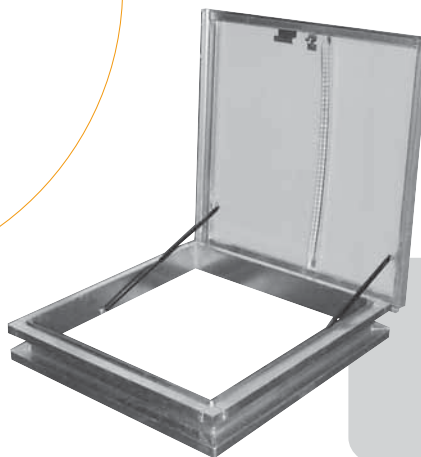


Hexacoif Pass

Comfort range



Hexacoif Pass is a skylight for roof access, which can be installed on all kind of existing support (concrete, steel, wood...).

Equipped in option with a cross bar for roof access, an adaptation for ladder and an opening griddle, this skylight allows an access to the roof in safety.

Dimensions

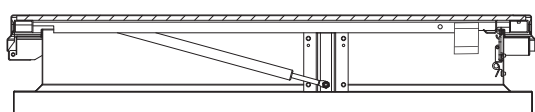
Performances

References	Inner dimensions <i>in cm</i>	Opening angle	Lighting Surface (SLu) <i>in m²</i>
C 50	50 x 50	90°	0,25
C 60	60 x 60	90°	0,36
C 70	70 x 70	90°	0,49
C 80	80 x 80	90°	0,64
C 85	85 x 85	90°	0,72
C 100	100 x 100	90°	1.00
C 120	120 x 120	60°	1.44
C 130	130 x 130	60°	1.69
C 140	140 x 140	60°	1.96
50 x 100	50 x 100	90°	0,50
70 x 100	70 x 100	90°	0,70
100 x 140	100 x 140	60°	1.40
100 x 150	100 x 150	60°	1.50

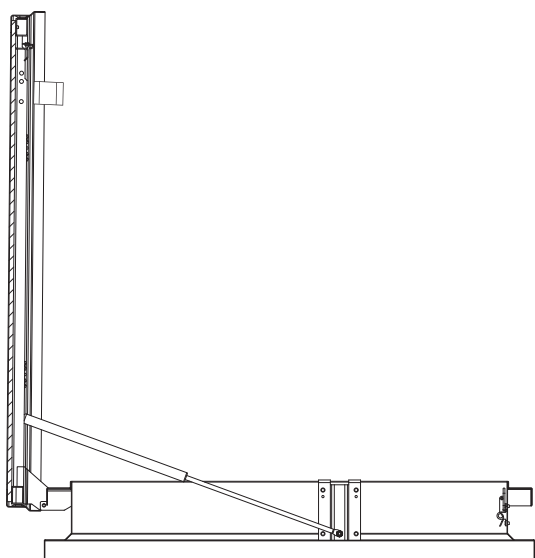
The hinges are mounted in the longest side of the skylight.

Hexacoif Pass

Comfort range



Hexacoif Pass closed



Hexacoif Pass in position to access on the roof

COMPONENTS:

- A metallic upstand in galvanized steel of 150 mm high, which can be installed on all kind of existing support (concrete, steel, wood...).
- This product also allows to transform the original function of an existing skylight, while conserving the existing upstand.
- Hexacoif Pass can be equipped in option with an insulated framework ($U_f = 2.5W/m^2 K$).
- An aluminium frame which protects the periphery of dome or PCA.
- An opening mechanism:
The opening frame can only be actuated manually. Two oil-and-air jacks hold the frame opened at around 60° or 90° , depending on the size of the skylight (please refer to the chart of dimensions and features). Two latches are employed to hold the frame in its close position).

FILLING:

- Our standard:
 - PCA 10 mm 4 skins
- In option:
 - PCA 16 mm 7 skins
 - Double dome in PMMA, polycarbonate or Hexachoc 1200J
 - Insulated aluminium cover

For additional details, see the rubric of the options.