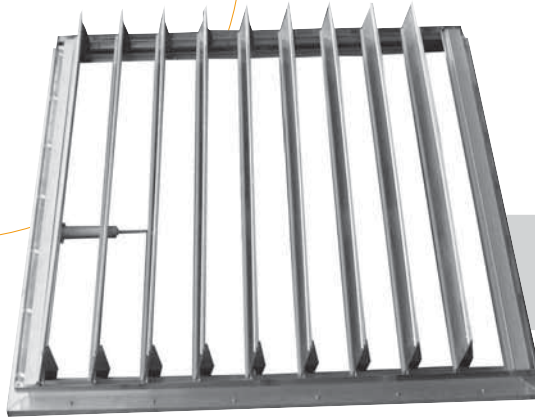


Waterproofed
roof

Lamlight

Smoke vents range

CE



Lamlight is a NSHEV with standard or insulated aluminium blades for dry roof or vault installation.

DESCRIPTION

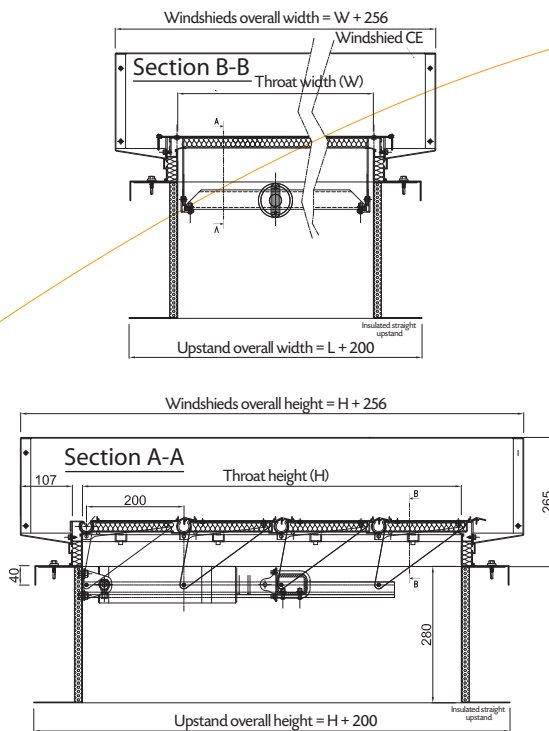
- Lamlight is a complete NSHEV (Natural Smoke and Heat Exhaust Ventilators) which has its own mechanisms. Blades are motorized by a pneumatic cylinder with gas spring.
- Aluminium blades pivot on an aluminium fix frame.
- Aluminium blades could be thermal insulated or no insulated.
- Windshields, compulsory.
- Thermal release, compulsory.
- Straight or inclined (5°) upstand. Could be thermal insulated.

REGULATION

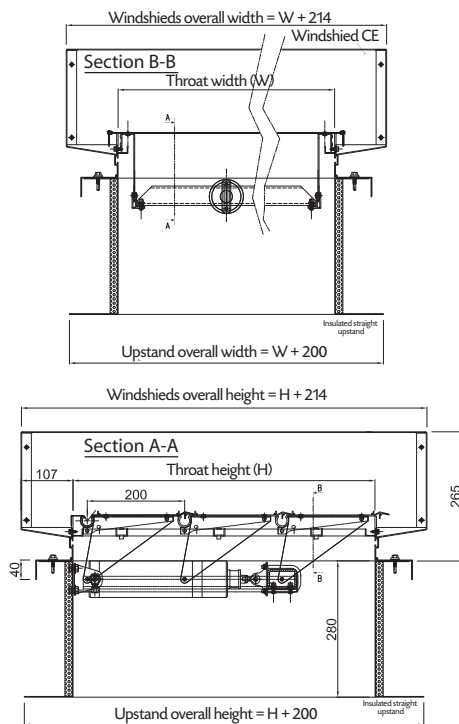
- Lamlight is a NSHEV (Natural Smoke and Heat Exhaust Ventilators) conforms to NF EN 12 101-2.

PERFORMANCES

- Opening area needed: $Aa = Cv \cdot Av$
 - AirFlow coefficient on roof: $Cv=0,67$ with windshields or upstand.
 - AirFlow coefficient on wall mounted: $Cv = 0,62$
 - Geometric area: $1 \leq Av \leq 6 \text{ m}^2$
- Reliability: Re 1,000 (+ 10,000)
- Wind load: WL 1 500 Pa
- Resistance to heat: B 300 °C
- Fire resistance performance: A1 (aluminium)



Principle of installation



Principle of installation on straight upstand

COMPOSITION

- Set of aluminium frame and blades
- Main finish: natural anodised paint.
- Mechanism integrated in the vent.

TYPES OF CONTROLS

- Electrical opening / closing (power on).
- Pneumatic opening / closing (power on).
- Fail safe opening/closing

DIMENSIONS LIMITS

Wall mounted:

- $500 \leq l \leq 2.000$ mm (parallel to the blades).
- $846 \leq l \leq 3.046$ mm (perpendicular to the blades).

With $1 \leq Av \leq 6$ m².

Roof:

- $500 \leq l \leq 2.000$ mm (parallel to the blades).
- $1.020 \leq l \leq 3.046$ mm (perpendicular to the blades).

With $1 \leq Av \leq 6$ m².

OPTIONS

- O/C switch.
- Thermal fuse (70°, 103°, 138° or 182 °C).
- Without upstand.

INSTALLATION

For wall mounted and roof installation:

- On cladding.
- On concrete throat.
- On dry roof: specific profile.
- On multilayered roof.

LIMITS USE

- Wall mounted openings range: from 0 to 30° from the vertical.
- Roof openings range: from 0 to 60° from the horizontal.