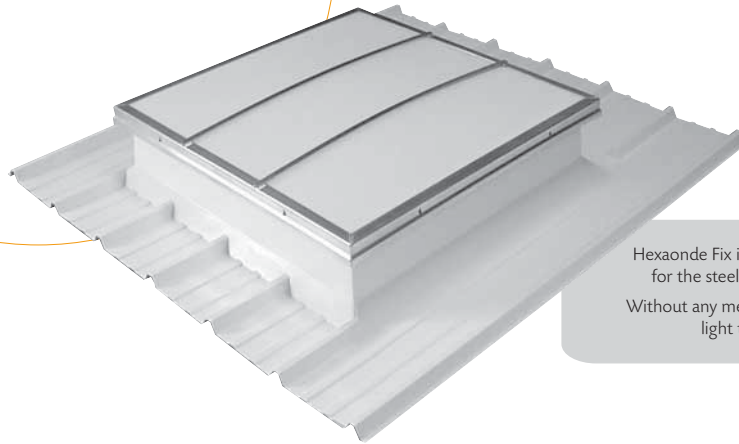


Steel deck
and sandwich
panel roof

Hexaonde Comfort range Fix



Hexaonde Fix is a skylight specifically designed for the steel deck and sandwich panel roofs. Without any mechanism, this system allows the light transmission inside the building.

Dimensions

Performances

References	Inner dimensions <i>in cm</i>	Lighting Surface (SLu) <i>in m²</i>
C 100	100 x 100	1,00
C 120	120 x 120	1,44
C 140	140 x 140	1,96
C 160	160 x 160	2,56
100 x 150	100 x 150	1,50
100 x 200	100 x 200	2,00
100 x 230	100 x 230	2,30
140 x 200	140 x 200	2,80

Steel deck
and sandwich
panel roof

Product line  HEXADOME

Hexaonde
Comfort range Fix



Hexaonde Fix

COMPONENTS:

- A polyester upstand of 30 cm high, equipped with a thermal insulation.
- The outside and the underside of the polyester upstand are protected by a gel coat (RAL 9010 in standard, for further colors, please consult us).
- A frame in galvanized aluminium, fixed on the polyester upstand, which protects the periphery of dome or PCA.

FILLING:

- Our standard:
 - PCA 10 mm 4 skins
- In option:
 - PCA 16 mm 7 skins
 - Double dome in PMMA, polycarbonate or Hexachoc 1200J

For additional details, see the rubric of the options.

56

our solutions for
the roof

adexsi Global solutions for lighting,
daily and smoke ventilation