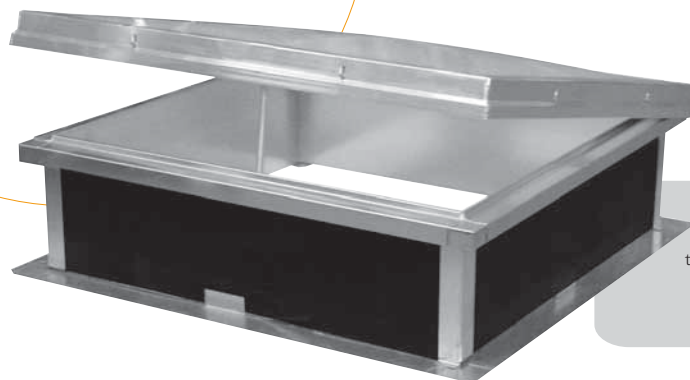


Waterproofed
roof

Hexasteel

Comfort range **Air**
Manual and Electric



Hexasteel Air is a skylight designed for the waterproofed roofs in order to carry out daily ventilation in the building. This product is available with manual or electrical activation.

Dimensions

Performances

References	Inner dimensions <i>in cm</i>	Lighting Surface (SLu) <i>in m²</i>
C 50	50 x 50	0,25
C 60	60 x 60	0,36
C 70	70 x 70	0,49
C 80	80 x 80	0,64
C 85	85 x 85	0,72
C 100	100 x 100	1,00
C 120	120 x 120	1,44
C 130	130 x 130	1,69
C 140	140 x 140	1,96
C 150	150 x 150	2,25
C 160	160 x 160	2,56
C 180	180 x 180	3,24
C 200	200 x 200	4,00
50 x 100	50 x 100	0,50
70 x 100	70 x 100	0,70
100 x 140	100 x 140	1,40
100 x 150	100 x 150	1,50
100 x 200	100 x 200	2,00
140 x 200	140 x 200	2,80

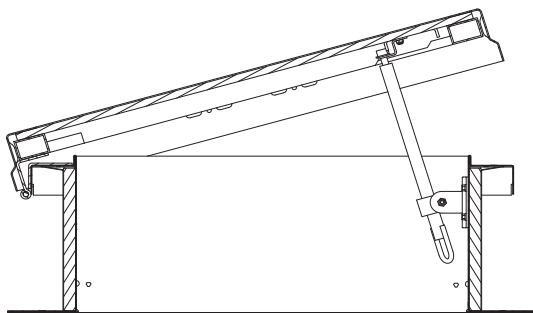
The hinges are mounted in the longest side of the skylight.

Waterproofed
roof

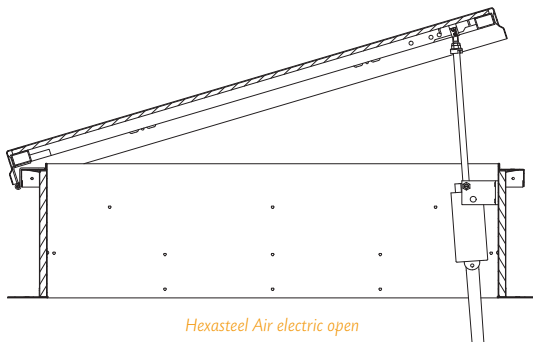
Product line 

Hexasteel

Comfort range **Air**
Manual and Electric



Hexasteel Air manual open



Hexasteel Air electric open

COMPONENTS:

- A metallic upstand 30, 40 or 50 cm high, which can be equipped with an insulation board 15 mm ($U_f = 2.5 \text{ W/m}^2 \text{ K}$) or 30 mm ($U_f = 1.5 \text{ W/m}^2 \text{ K}$). The surface of the insulation can be bitumen or PVC coated for a direct weld with the waterproofing membrane.
- An aluminium frame which protects the periphery of dome or PCA.
- An opening mechanism:
 - Hexasteel Air Manual: a screw operated with the help of a crankshaft (250 mm stroke).
 - Hexasteel Air Electric: with an electric drive 230V, 50Hz, 150W, 0.7A, 300 mm stroke (switch in option).

FILLING:

- Our standard:
 - PCA 10 mm 4 skins
- In option:
 - PCA 16 mm 7 skins
 - Double dome in PMMA, polycarbonate or Hexachoc 1200J
 - Insulated aluminium cover

For additional details, see the rubric of the options.

16

our solutions for
the roof

adexsi Global solutions for lighting,
daily and smoke ventilation